



Pearce Creek Dredged Material Containment Facility (DMCF) Exterior Monitoring Program

Presented by Kristen Keene
Maryland Environmental Service
on behalf of the Maryland Port Administration
March 20, 2015



Overview

- ▶ Exterior Monitoring Program Objectives

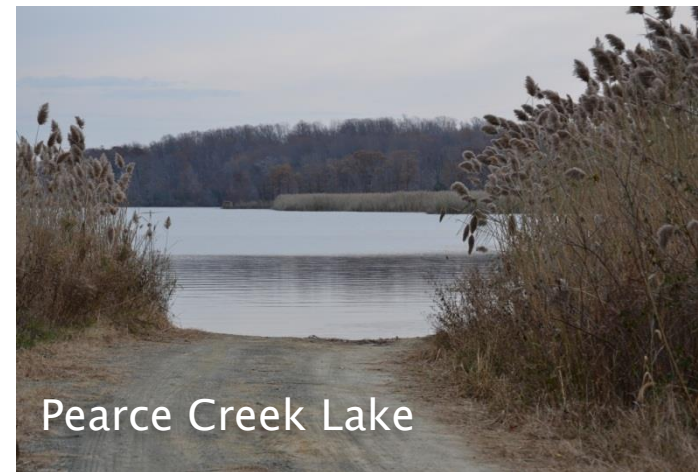
- ▶ Exterior Monitoring Examples
 - Hart–Miller Island DMCF
 - Cox Creek DMCF
 - Masonville DMCF

- ▶ Next Steps

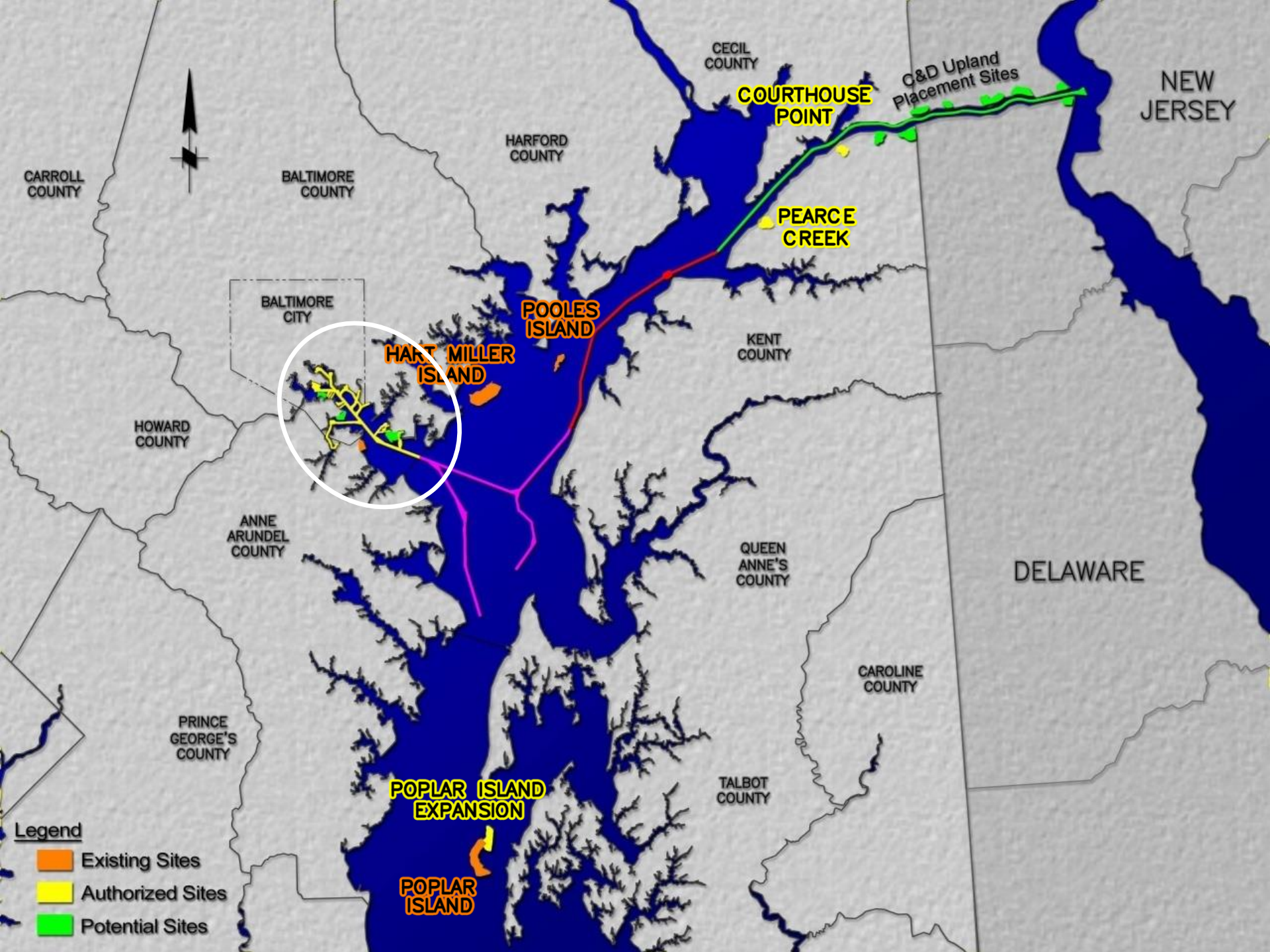


Exterior Monitoring Program Objectives

- ▶ The Pearce Creek Exterior Monitoring Program is a voluntary effort being established to monitor environmental parameters in the area surrounding the Pearce Creek DMCF.
- ▶ The first monitoring event will establish a baseline, and subsequent events will be conducted biannually each spring and fall in accordance with the Pearce Creek Monitoring Program parameters.
- ▶ The assumption is that placement and discharge activities will not change the quality of environmental conditions in Pearce Creek Lake or the Elk River when compared to baseline measurements.







CARROLL COUNTY

BALTIMORE COUNTY

HARFORD COUNTY

CECIL COUNTY

COURTHOUSE POINT

G&D Upland Placement Sites

NEW JERSEY

PEARCE CREEK

BALTIMORE CITY

POOLES ISLAND

KENT COUNTY

HART MILLER ISLAND

HOWARD COUNTY

ANNE ARUNDEL COUNTY

QUEEN ANNE'S COUNTY

DELAWARE

CAROLINE COUNTY

PRINCE GEORGE'S COUNTY

TALBOT COUNTY

POPLAR ISLAND EXPANSION

POPLAR ISLAND

Legend

Existing Sites

Authorized Sites

Potential Sites



Hart - Miller Island DMCF



Hart-Miller Island DCMF Exterior Monitoring





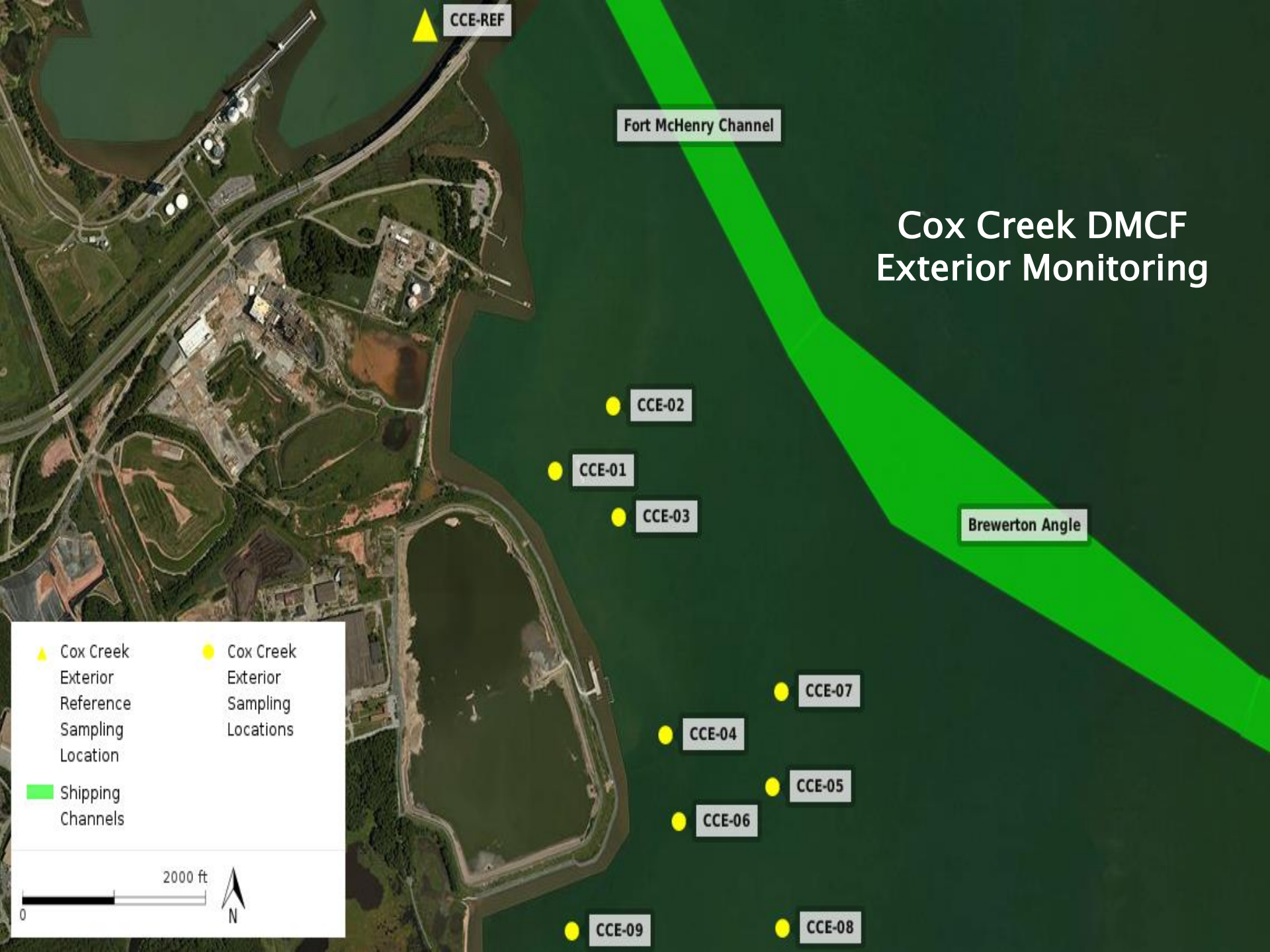
Cox Creek DMCF






Swan Creek Wetlands



Cox Creek DMCF Exterior Monitoring



 Cox Creek Exterior Reference Sampling Location	 Cox Creek Exterior Sampling Locations
 Shipping Channels	

2000 ft

0

N



Masonville DMCF



Masonville Exterior

Legend

- Masonville Exterior Sampling Location (2013)
- Previous Locations for ME-02, ME-05, and ME-06 (2006-2010)
- ▲ Masonville Exterior Reference Sampling Location
- Masonville DMCF
- Spillway

Sources
ArcGIS Map Service 2012



**CHANNEL AND BASIN
AT SOUTH LOCUST POINT
MARINE TERMINAL**

FERRY BAR CHANNEL

Middle Branch

**Masonville DMCF
Exterior Monitoring**

ME-07

ME-08

ME-03

ME-09

ME-REF

ME-02

ME-02

001

ME-04

ME-05

ME-01

ME-06

ME-05

ME-06

Masonville DMCF (130 Acres)

Masonville Marine
Terminal Phase II

Kurt Iron Metal Channel

Kurt Iron
Property

Wet Basin

Fairfield Marine
Terminal



Next Steps

- ▶ Conduct hydrographic and topographic surveys of Pearce Creek Lake.
- ▶ Finalize the Pearce Creek Exterior Monitoring Program parameters.
- ▶ Initiate sampling program.
- ▶ Continue outreach with community members and interested stakeholders.



Questions?

www.marylandports.com